

## **Tower Cam via Mesh**

Written by Jim Kinter, K5KTF - Last Updated Monday, 16 January 2012 22:19

---

Installed one of my Trendnet TV IP110 webcams in a weatherproof box, then installed that inline with my 24dBi dish on a 50' push up pole.

## Tower Cam via Mesh

Written by Jim Kinter, K5KTF - Last Updated Monday, 16 January 2012 22:19

---

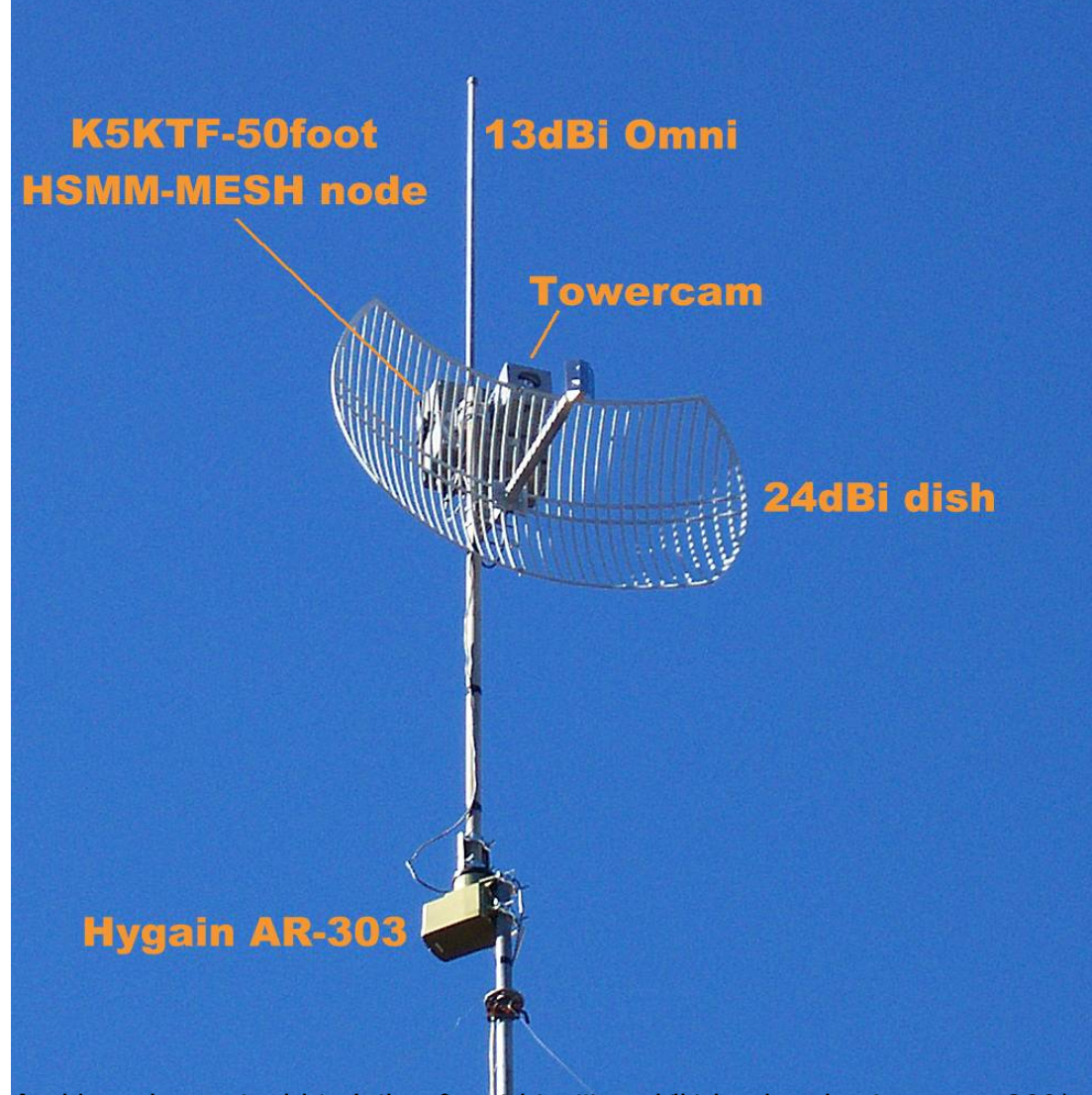


## Tower Cam via Mesh

Written by Jim Kinter, K5KTF - Last Updated Monday, 16 January 2012 22:19

---

With this setup, the 13dBi Omni antenna is used for the mesh network, and the 24dBi dish is used for the tower cam.



The tower is located on a hilltop, providing a clear line of sight for the mesh network and the tower cam. The setup is designed to provide a stable and reliable connection for the tower cam via the mesh network.